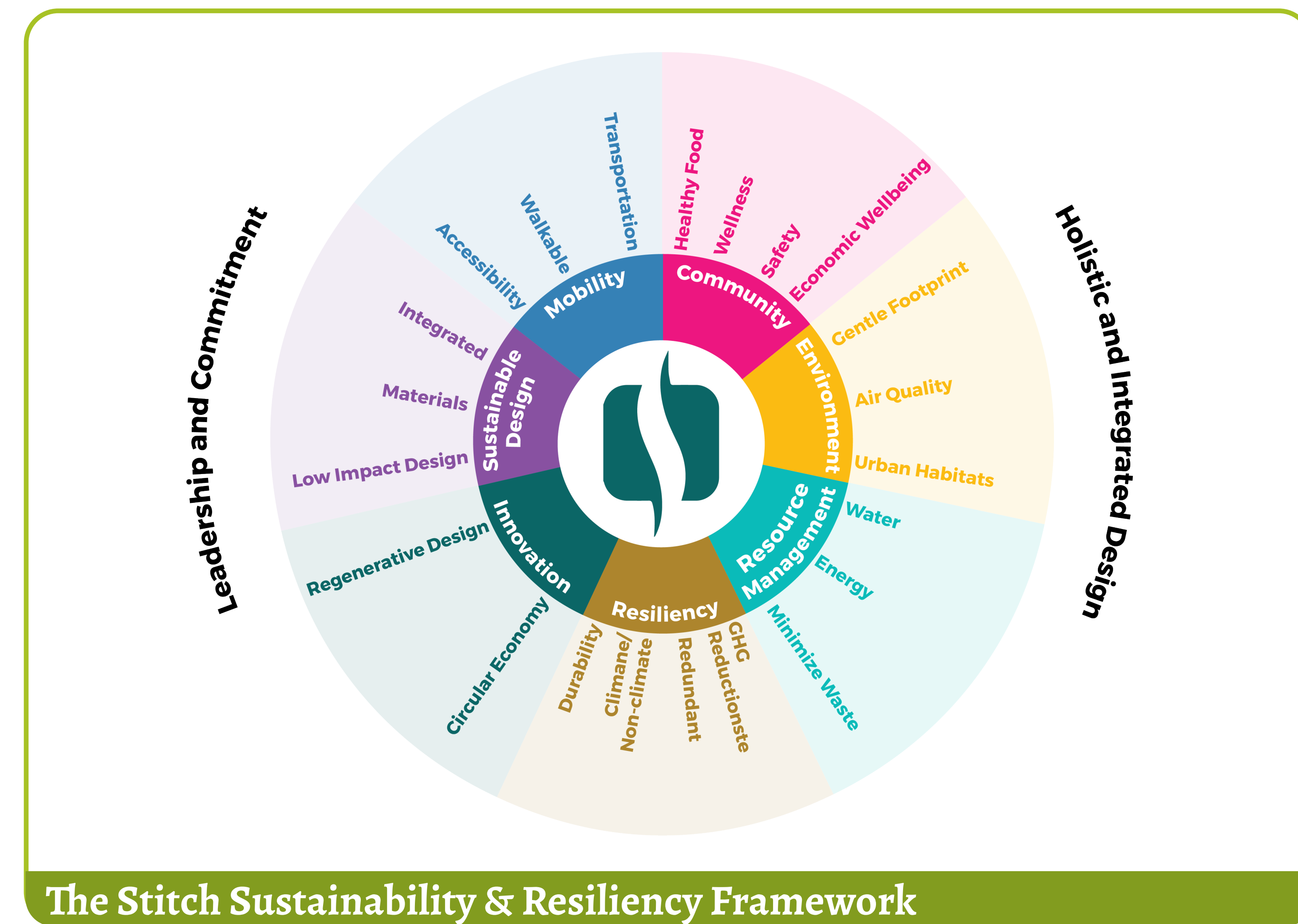


SUSTAINABILITY & RESILIENCY

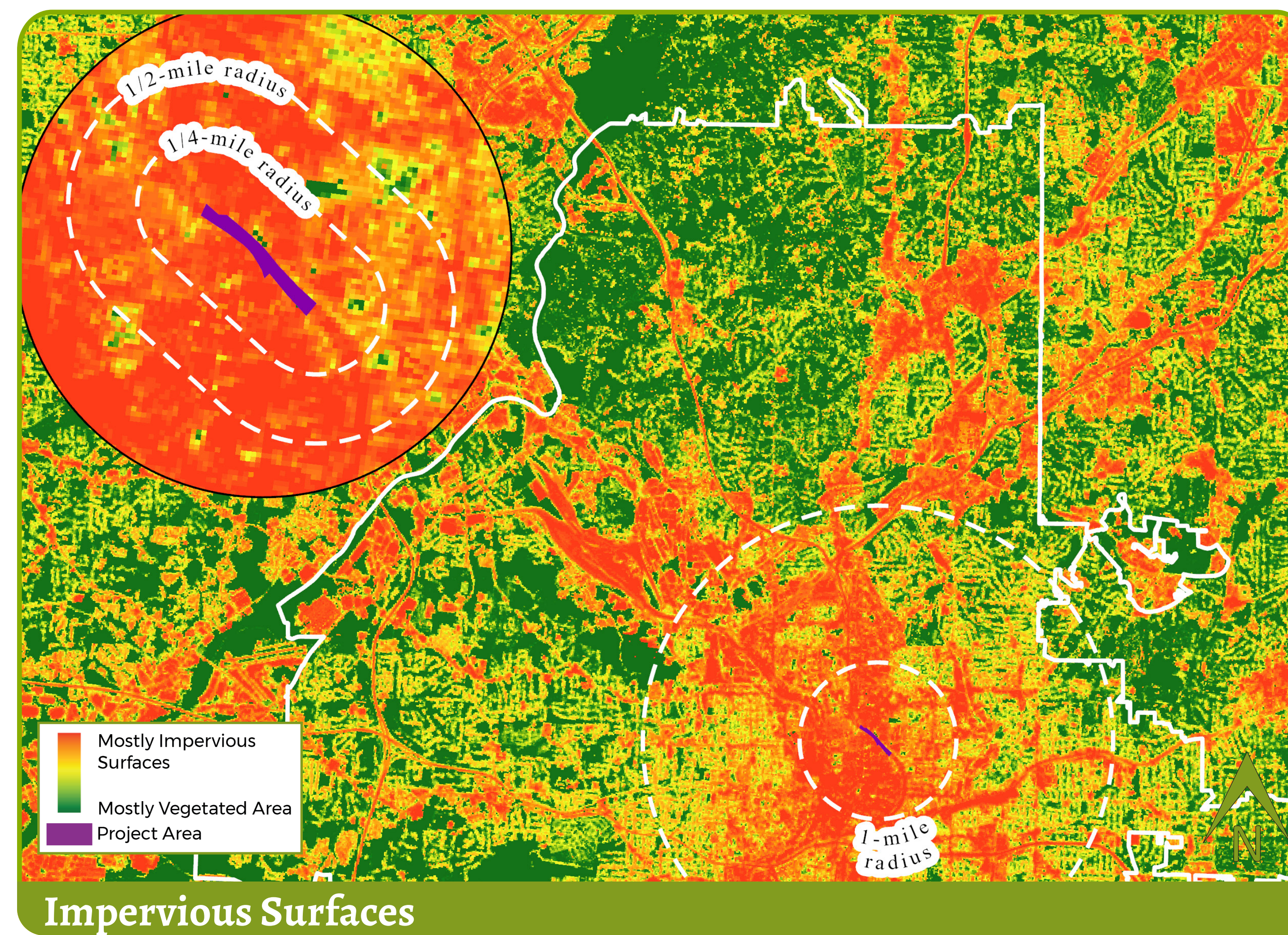
Introduction

The Stitch and the surrounding areas need to be a thriving, vibrant area that offers a unique and authentic experience. A sustainable environment can provide tangible benefits to protect natural resources by reducing energy use and addressing storm water management techniques to reduce life cycle costs, mitigate climate change and promote biodiversity. A commitment to sustainability can also improve the quality of life and health outcomes for residents and enhance the visitor experience. *On this display board you will find an analysis of sustainability and resiliency for the Stitch, along with related opportunities and challenges. Once you've read these sections, take a look at the "Questions to Consider" and share your answers with the team!*

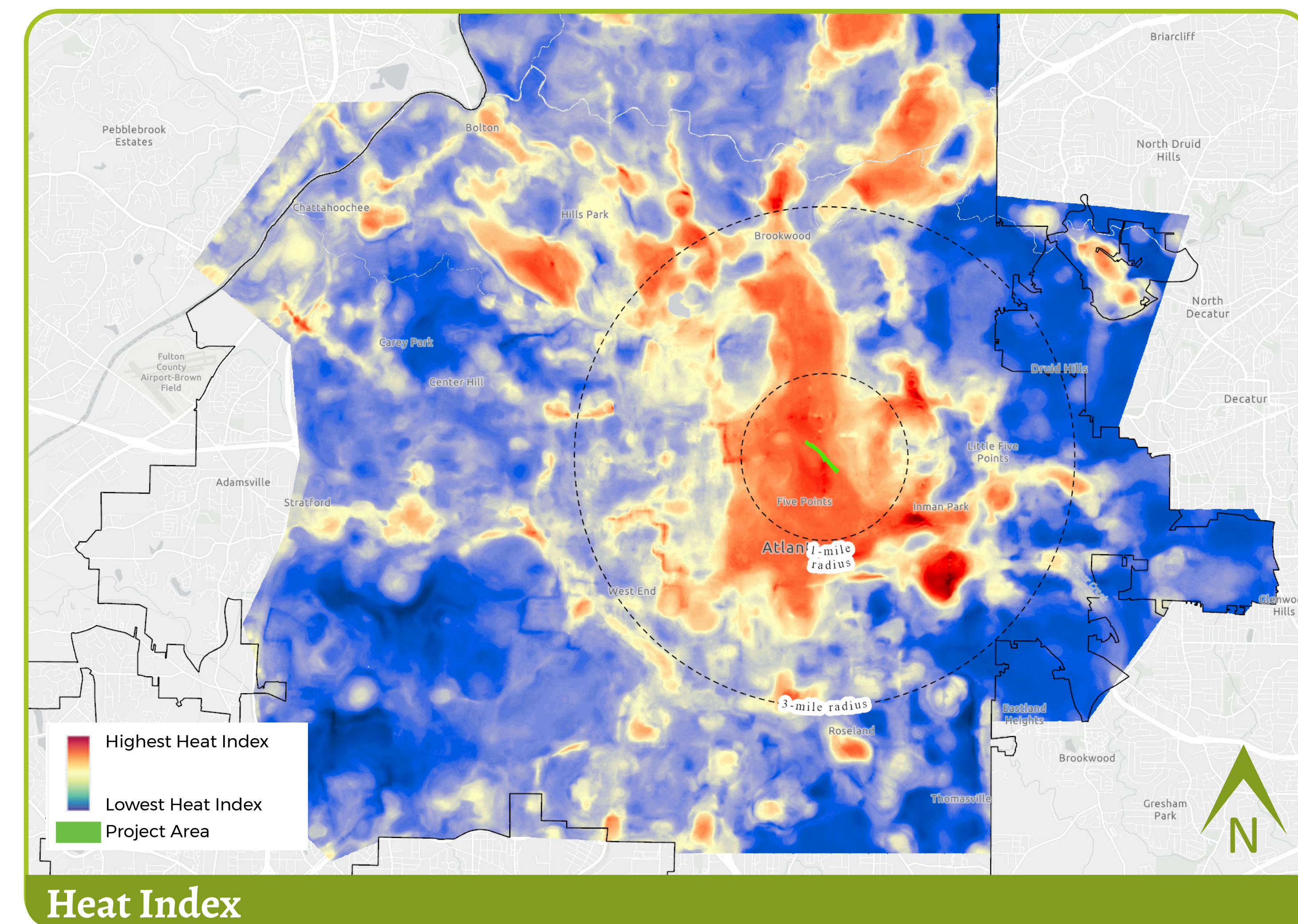
Sustainability & Resiliency Analysis



The framework is an analytical tool used to set the foundation for applying these principles to project development. This framework is a dynamic guide, evolving with ongoing collaboration and community input to ensure long-term resilience and sustainability.



Impervious surfaces, such as asphalt, concrete, and buildings, have a significant impact on the heat index and contribute to the Urban Heat Island effect. Reducing impervious surfaces can create more climate-resilient urban environments.



The Urban Heat Island (UHI) effect refers to the phenomenon where urban areas experience higher temperatures than their surrounding rural areas. The heat index is a measure of how hot it feels to the human body when you factor in both air temperature and relative humidity.



Five Priority Areas: Energy and Emissions, Station Communities and Ridership, Sustainable Infrastructure, Natural Resources and Economic Development and Governance.

Opportunities & Challenges

Opportunities

- 1) Grow renewable energy by supporting in obtaining, installing, and operating forms of renewable energy.
- 2) Address heat, precipitation, extreme storms through mitigation and adaptation.
- 3) Improve efficiency of power, water, air, and waste through building and landscape design.

Challenges

- 1) Local ordinances, policies, permitting and agency practices that not aligned with sustainable practices.
- 2) Multiple agencies with conflicting requirements.

Questions to Consider

1. What are your Sustainability & Resiliency priorities for the Stitch?
2. What Sustainable & Resilient features would you like to see for the Stitch?
3. What do you think of the Sustainability & Resiliency framework?

Sustainability & Resiliency Strategies



November 15, 2023

Community Kick-off & Visioning Workshop