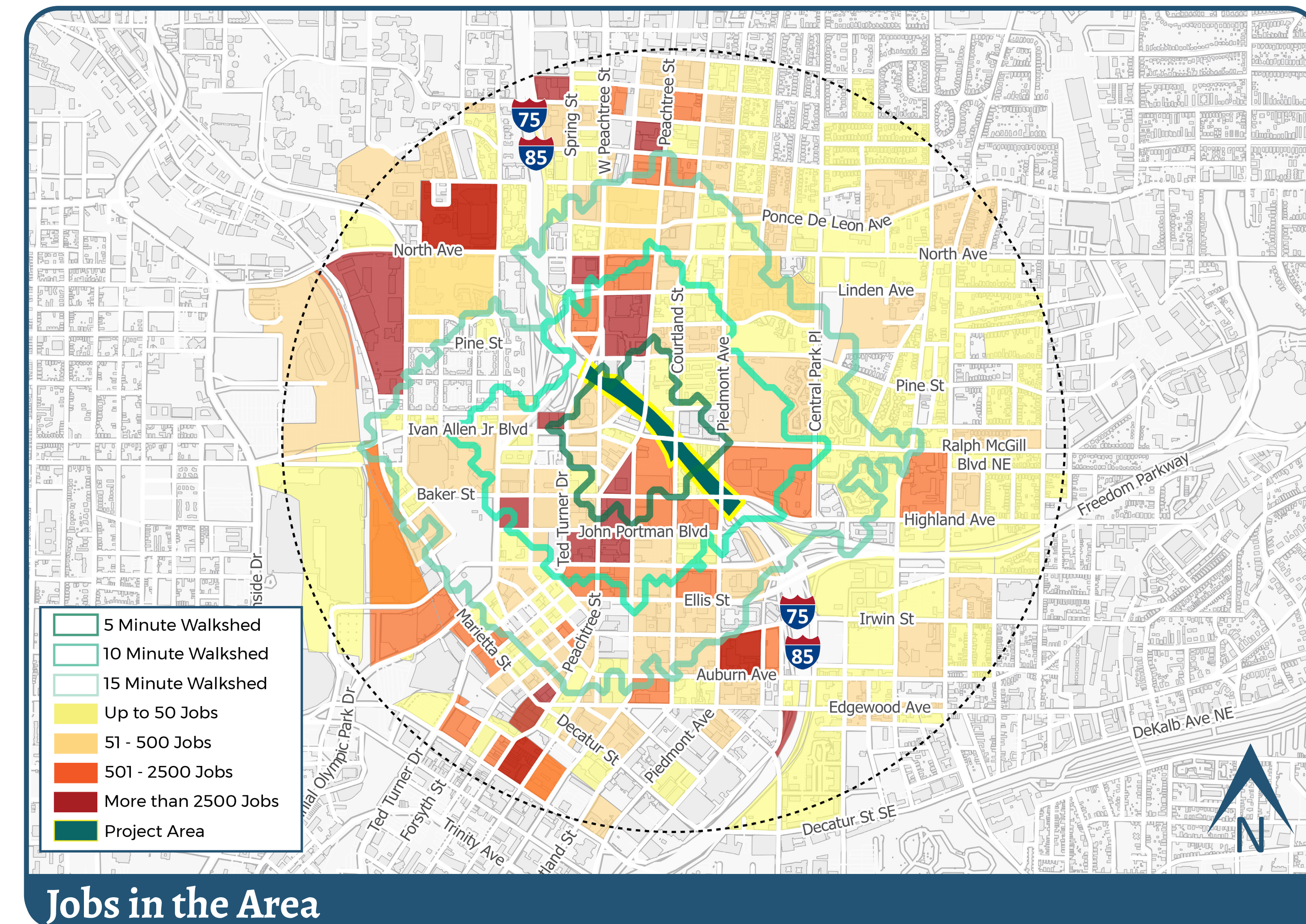


ECONOMIC OPPORTUNITY

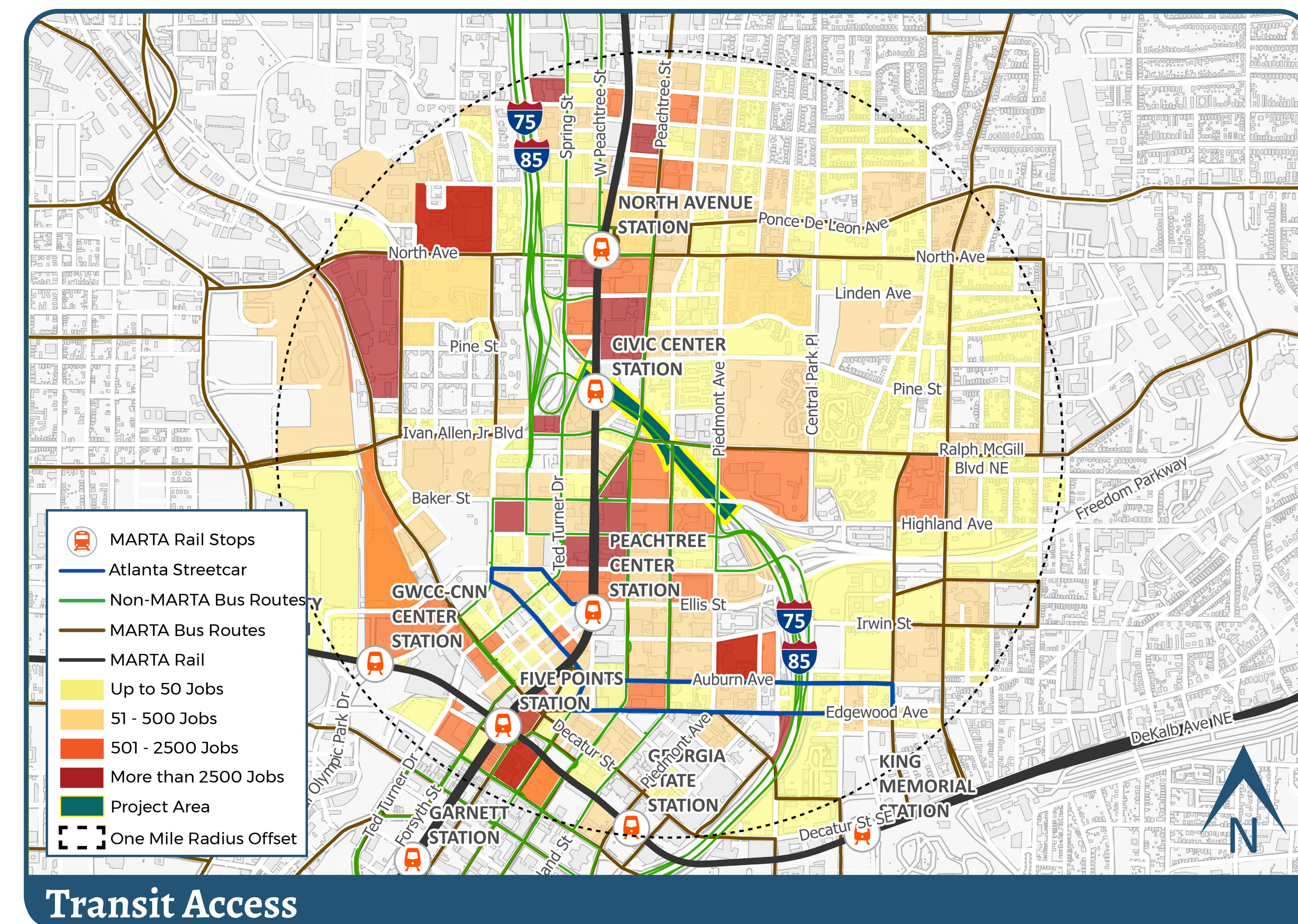
Introduction

The Stitch has the potential to catalyze economic activity for the area, creating new jobs and business opportunities. It will be vital to ensure there is adequate support for this local economic growth, such as providing a variety of transportation options to access jobs and increasing the availability of essential goods and services. These types of support play a crucial role in the prosperity of residents, employees, and businesses. **On this display board you will find an analysis of economic opportunity around the Stitch, along with related opportunities and challenges. Once you've read these sections, take a look at the "Questions to Consider" and share your answers with the team!**

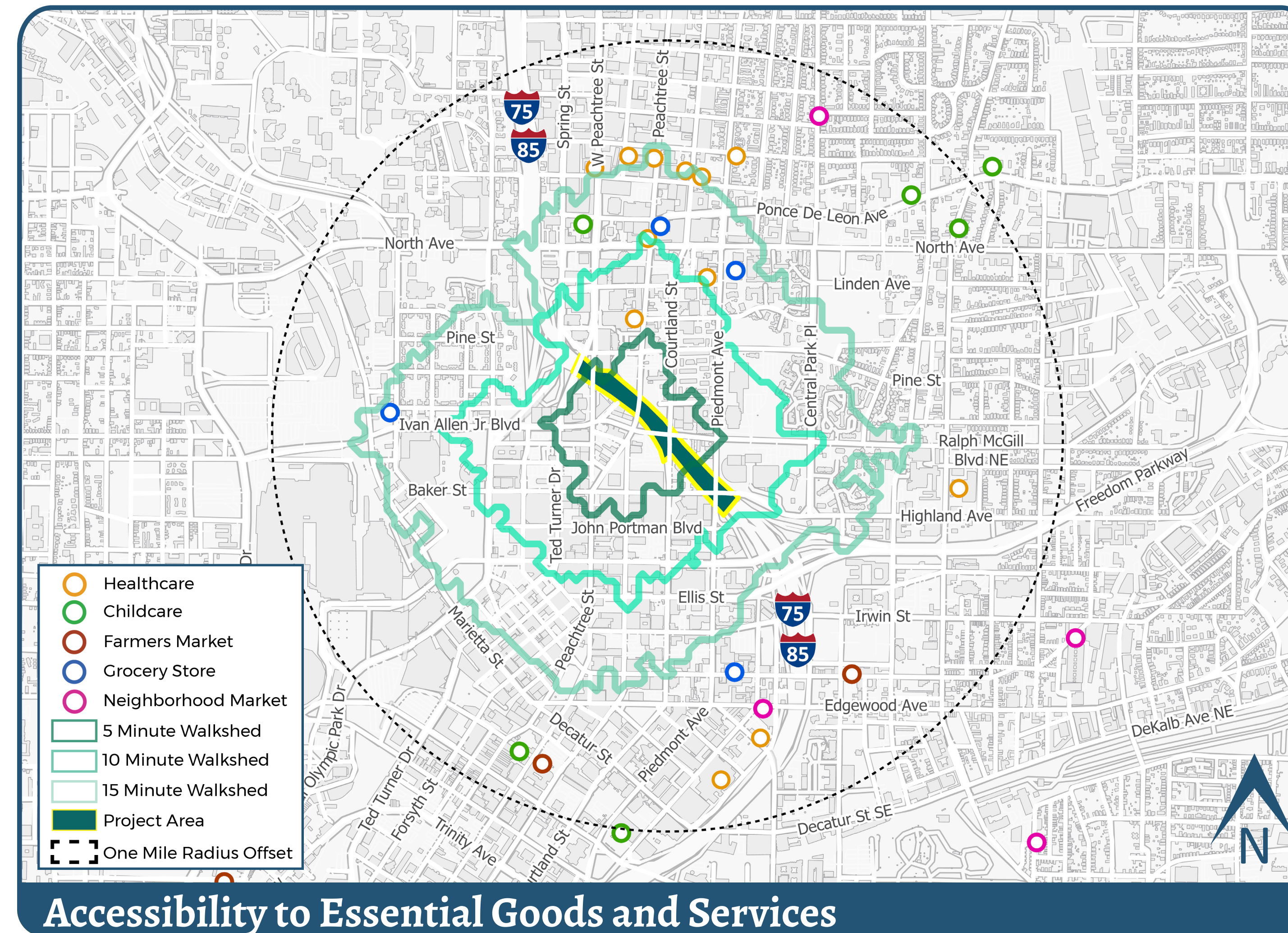
Economic Opportunity Analysis



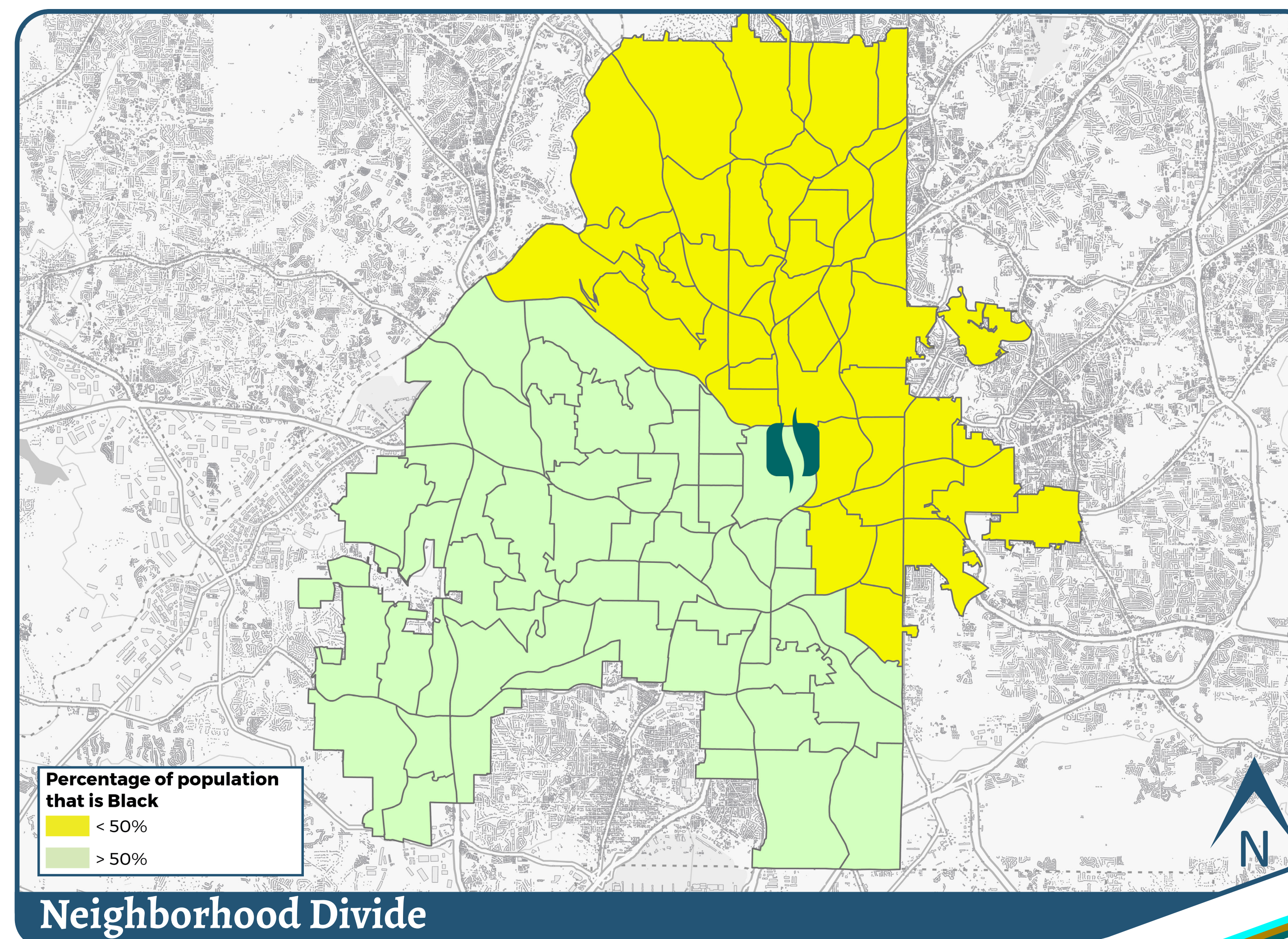
There are approximately 145,788 jobs making up 18 sectors within 1 mile of the Stitch. Top 5 industries represented by these jobs include Information; Professional, Scientific, Technical Services; Health Care & Social Assistance; Public Administration; and Educational Services.



In general, heavy rail transit stations and regional commuter bus routes provide transit service to areas with high concentrations of employment while local bus routes provide transit service to certain areas with lower concentrations of employment.



Essential goods and services such as grocery stores, child care facilities, and healthcare facilities support residential and workforce development in the area. This map shows these services and their distance from the Stitch.



Atlanta's neighborhoods are segregated along a clear line. Newer business districts such as Midtown that have developed in a live/work/play pattern have thrived while Downtown has struggled.

Opportunities & Challenges

Opportunities

- 1) Provide new and enhanced multimodal transportation connections to jobs in the area.
- 2) Work with public and private partners to integrate workforce training programs for construction and permanent jobs resulting from the Stitch.
- 3) Catalyze new job opportunities.

Challenges

- 1) Ensuring new jobs that are brought into the area represent a diverse set of industries and income levels to provide opportunities for all.
- 2) Providing equal access to essential goods and services to both residents and employees in the area.
- 3) Shaping the economic environment in the area to provide a firm foundation for small businesses.

Questions to Consider

1

What types of jobs would you like to see in the area?

2

What are other goods, services, and amenities that would support economic development?

3

What types of workforce development programs would be beneficial?

Essential Goods & Services



November 15, 2023

Community Kick-off & Visioning Workshop