

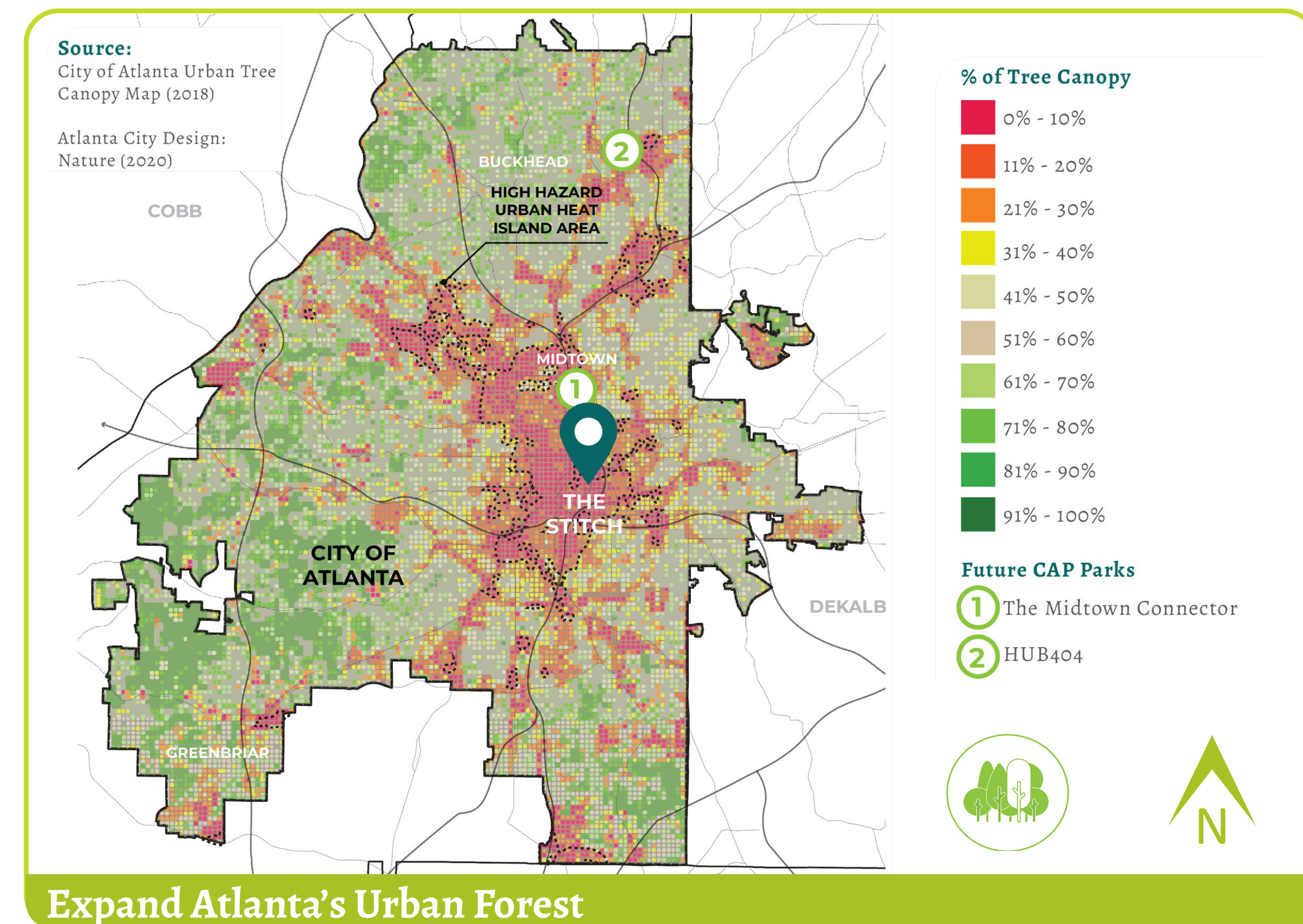


# PARKS & OPEN SPACES

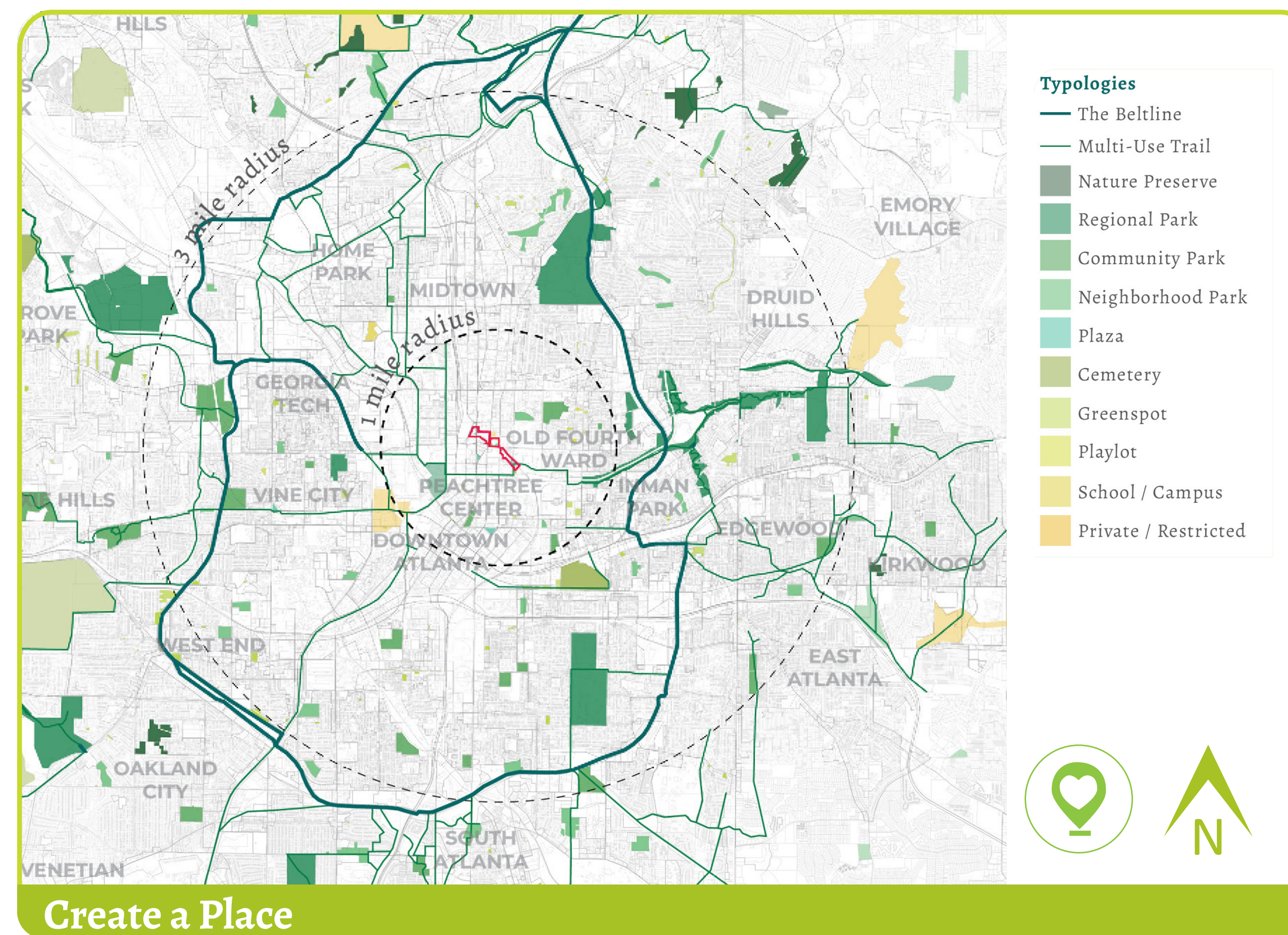
## Introduction

The Stitch has the opportunity to establish a green heart for Atlanta — expanding the City’s iconic urban forest to link Downtown and Midtown. Located in an area where there is an urgent need for parks and open space, the Stitch can increase tree canopy coverage, restore ecological systems, and improve quality of life for local residents and visitors. Acting as the missing link between existing urban destinations, the Stitch can offer a signature public open space that offers a range of park programming and landscape experiences, creating a welcoming and inclusive amenity for all. *On this display board, you will find a discussion of the need for parks and open space in Atlanta.*

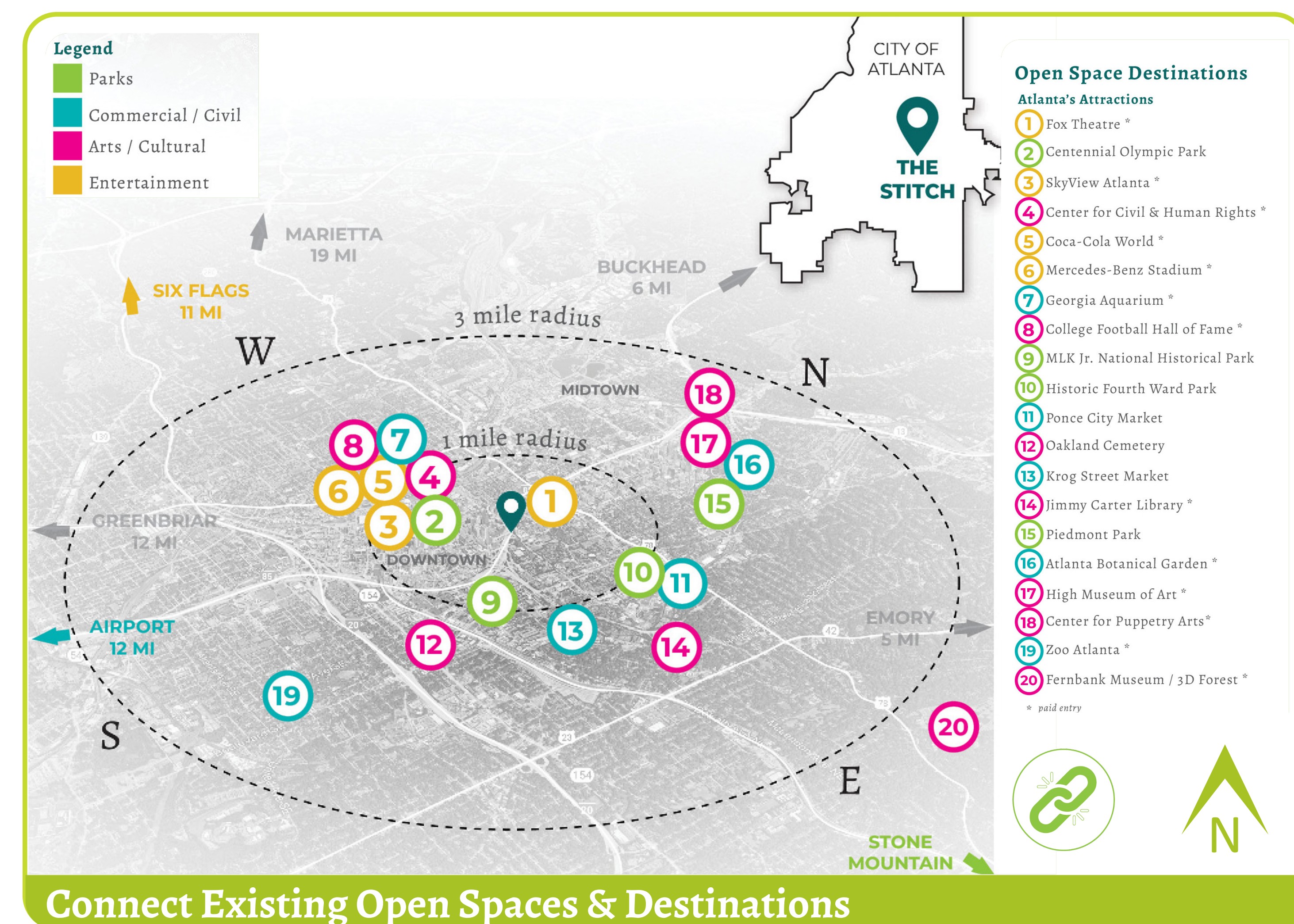
## Parks & Open Space Analysis



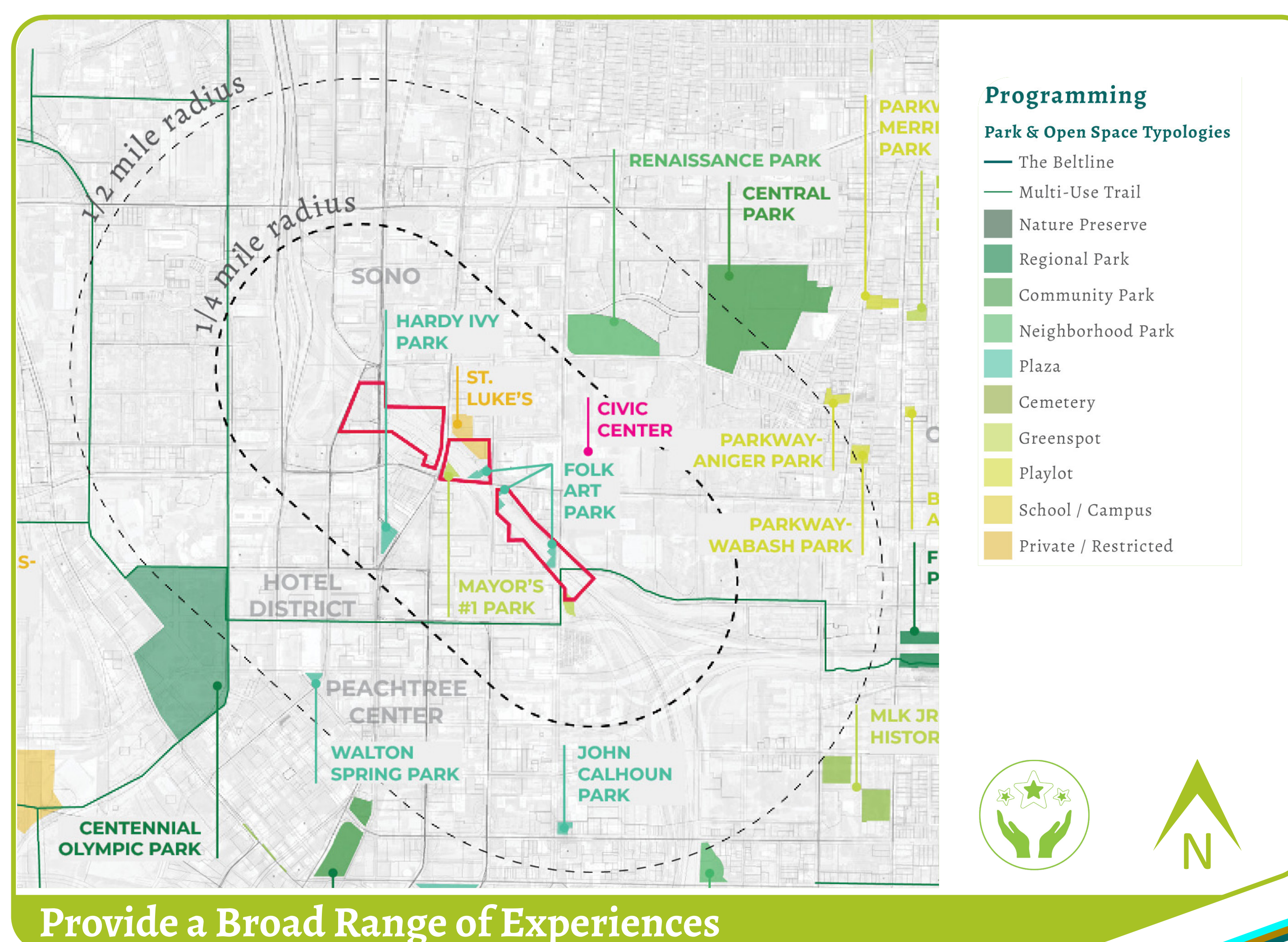
Located in an area where there is an urgent need for increased greenspace, the Stitch can increase tree canopy coverage, restore ecological systems, and improve quality of life for local residents and visitors.



The Stitch has the opportunity to create a signature public open space and a year-round destination within the heart of Downtown.



There are major open space and recreational destinations near the Stitch, but they are currently disconnected by the barrier the existing highway creates. The Stitch can provide the missing link within the urban fabric.



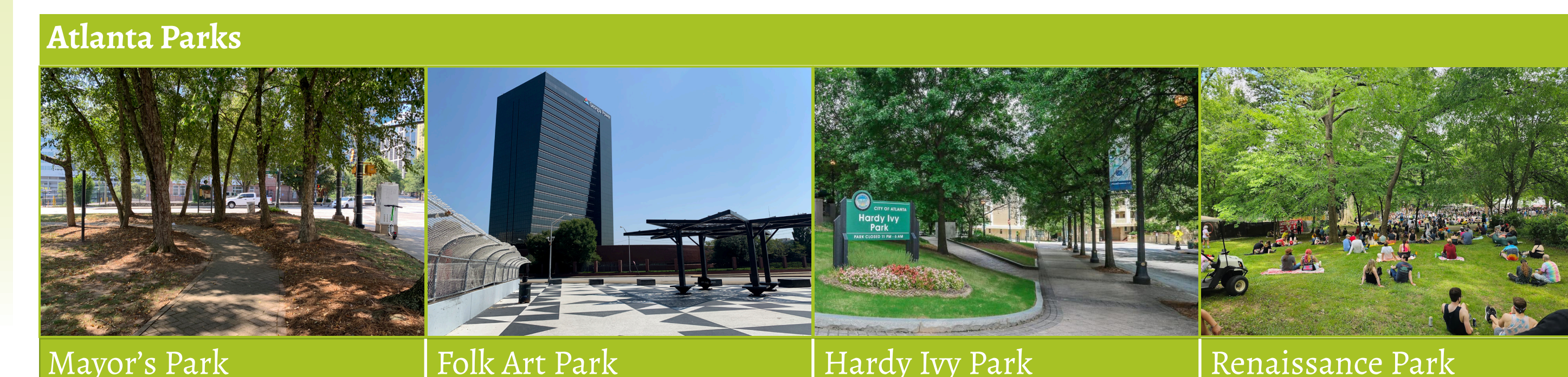
The Stitch can offer a range of park programming and landscape experiences to create a welcoming and inclusive amenity for all residents and visitors.



Aerial view of the Connector looking west



Northwest view of the Connector from the Courtland Street bridge



Mayor's Park Folk Art Park Hardy Ivy Park Renaissance Park

November 15, 2023

## Community Kick-off & Visioning Workshop